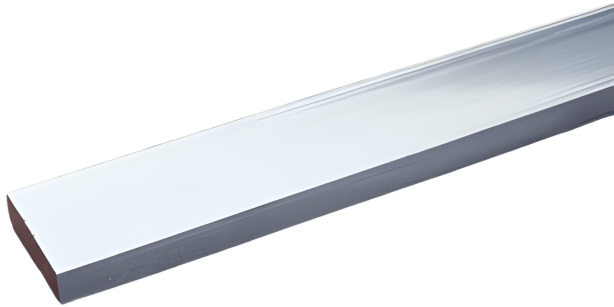


busbar 30 x 10 (01625)



The picture may show a similar product.

Description

Part No.: **01625 000**

busbar 30 x 10

material: copper Cu-ETP (No. CW004A) acc. to EN 13601 (99.9% copper), strength class R300 (300 N/mm²)

length 2.40 m, tinned

System

60Classic, 185Power, centre feed unit, 100Energy

Advantages of the product

Tin-plated Cu busbars considerably reduce the effort of preparing the contact points.

The Cu busbars are effectively protected against aggressive media.

Product group 06

Subgroup 83

pack size 1

EAN 4021267016258

ETIM 5.0 EC001522

ETIM 8.0 EC001522

Approvals

Standards

IEC 61439-1:2020

UL 508

Approvals

CSA , UL , DNV GL



for UL feeder circuits >250V

type number: 30x10-L

UL file: E123577, UL category (for USA): NMTR <https://www.ul.com>

UL file: E123577, UL category (for Canada): NMTR7 <https://www.ul.com>

CSA file: 110285, CSA class: 3211-37 <https://directories.csa-international.org>

CCC approval: no certification required

Technical data

Details IEC

Standards

IEC 61439-1:2020

Electrical data

power dissipation of the article:

The power dissipation at a typical load of 80 % results to 40.3 W.

(The power dissipation at full load would be 63.0 W.)

Supplementary data IEC

The following values have been verified with tests under certain conditions. Please ask Wöhner for this conditions before designing your panel.

current at 30 K 630 A

:

min. permitted operation temperature -40°C

Details UL

Standards

UL 508

for UL feeder circuits >250V

considering the permitted temperature rise at the concrete installation conditions the following capacity could be accepted by UL (file E197039

max. load acc. to UL 508: 630 A

for applications in the system 60Classic up to 756 A

Notice the rated voltage of the used busbar support in the application.

Mechanical data

W x H x D: 2400 x 30 x 10

weight: 643.2 kg/100

cross-section: 300 mm²

Edge radius 0.5

Material properties

halogen-free: Yes

Application notes

Please respect the insulation characteristics of the busbar support for your application.

see product description of the used busbar support

for UL feeder circuits >250V

Accessories

covers



01245 000

busbar cover
for 12 - 30 x 10 busbar, 1 m long
touch protection cover

measuring transformers 333mV



37309 000A

measuring transformer 910 A / 333 mV
size CT2
class 0.5s

when used on busbars or in 630 A adapters, article 37900 is additionally required

NEW



37304 000A

measuring transformer 250 A / 333 mV
size CT2
class 0.5s

when used on busbars or in 630 A adapters, article 37900 is additionally required

NEW



37302 000A

measuring transformer 910 A / 333 mV
size CT2
class 0.5

when used on busbars or in 630 A adapters, 37900 is additionally required

NEW



37307 000A

measuring transformer 600 A / 333 mV
size CT2
class 0.5s

when used on busbars or in 630 A adapters, article 37900 is additionally required

NEW



37303 000A

measuring transformer 200 A / 333 mV

size CT2

class 0.5s

when used on busbars or in 630 A adapters, article 37900 is additionally required

on request



37306 000A

measuring transformer 500 A / 333 mV

size CT2

class 0.5s

when used on busbars or in 630 A adapters, article 37900 is additionally required

NEW



37308 000A

measuring transformer 800 A / 333 mV

size CT2

class 0.5s

when used on busbars or in 630 A adapters, article 37900 is additionally required

NEW



37301 000A

measuring transformer 800 A / 333 mV

size CT2

class 0.5

when used on busbars or in 630 A adapters, article 37900 is additionally required

NEW



37300 000A

measuring transformer 600 A / 333 mV

size CT2

class 0.5

when used on busbars or in 630 A adapters, article 37900 is additionally required

NEW

**37299 000A**

measuring transformer 500 A / 333 mV

size CT2

class 0.5

when used on busbars or in 630 A adapters, article 37900 is additionally required

NEW

**37305 000A**

measuring transformer 400 A / 333 mV

size CT2

class 0.5s

when used on busbars or in 630 A adapters, article 37900 is additionally required

NEW

**37298 000A**

measuring transformer 400 A / 333 mV

size CT2

class 0.5

when used on busbars or in 630 A adapters, article 37900 is additionally required

NEW

**37297 000A**

measuring transformer 250 A / 333 mV

size CT2

class 0.5

when used on busbars or in 630 A adapters, article 37900 is additionally required

NEW

**37296 000A**

measuring transformer 200 A / 333 mV

size CT2

class 0.5

when used on busbars or in 630 A adapters, article 37900 is additionally required

NEW



37295 000A

measuring transformer 910 A / 333 mV

size CT2

class 1

when used on busbars or in 630 A adapters, article 37900 is additionally required

NEW



37294 000A

measuring transformer 800 A / 333 mV

size CT2

class 1

when used on busbars or in 630 A adapters, article 37900 is additionally required

NEW



37293 000A

measuring transformer 600 A / 333 mV

size CT2

class 1

when used on busbars or in 630 A adapters, article 37900 is additionally required

NEW



37292 000A

measuring transformer 500 A / 333 mV

size CT2

class 1

when used on busbars or in 630 A adapters, article 37900 is additionally required

NEW



37291 000A

measuring transformer 400 A / 333 mV

size CT2

class 1

when used on busbars or in 630 A adapters, article 37900 is additionally required

NEW



37290 000A

measuring transformer 250 A / 333 mV

size CT2

class 1

when used on busbars or in 630 A adapters, article 37900 is additionally required

NEW



37289 000A

measuring transformer 200 A / 333 mV

size CT2

class 1

when used on busbars or in 630 A adapters, article 37900 is additionally required

NEW

current transformers class 1



37212 000A

current transformer 200 A / 5 A

size CT2

2.5 VA / class 1

when used on busbars or in 630 A adapters, article 37900 is additionally required



37213 000A

current transformer 250 A / 5 A

size CT2

2.5 VA / class 1

when used on busbars or in 630 A adapters, article 37900 is additionally required



37214 000A

current transformer 400 A / 5 A

size CT2

2.5 VA / class 1

when used on busbars or in 630 A adapters, article 37900 is additionally required

**37215 000A**

current transformer 500 A / 5 A

size CT2

2.5 VA / class 1

when used on busbars or in 630 A adapters, article 37900 is additionally required

**37216 000A**

current transformer 600 A / 5 A

size CT2

2.5 VA / class 1

when used on busbars or in 630 A adapters, article 37900 is additionally required

**37217 000A**

current transformer 800 A / 5 A

size CT2

2.5 VA / class 1

when used on busbars or in 630 A adapters, article 37900 is additionally required

**37218 000A**

current transformer 910 A / 5 A

size CT2

2.5 VA / class 1

when used on busbars or in 630 A adapters, article 37900 is additionally required

stock sale

current transformers class 0.5

**37219 000A**

current transformer 200 A / 5 A

size CT2

1 VA / class 0.5

when used on busbars or in 630 A adapters, article 37900 is additionally required

**37220 000A**

current transformer 250 A / 5 A

size CT2

2.5 VA / class 0.5

when used on busbars or in 630 A adapters, article 37900 is additionally required

**37221 000A**

current transformer 400 A / 5 A

size CT2

2.5 VA / class 0.5

when used on busbars or in 630 A adapters, article 37900 is additionally required

**37222 000A**

current transformer 500 A / 5 A

size CT2

2.5 VA / class 0.5

when used on busbars or in 630 A adapters, article 37900 is additionally required

**37223 000A**

current transformer 600 A / 5 A

size CT2

2.5 VA / class 0.5

when used on busbars or in 630 A adapters, article 37900 is additionally required

**37224 000A**

current transformer 800 A / 5 A

size CT2

2.5 VA / class 0.5

when used on busbars or in 630 A adapters, article 37900 is additionally required

stock sale

**37232 000A**

current transformer 200 A / 5 A, with decl. of conformity

size CT2

1 VA / class 0.5

when used on busbars or in 630 A adapters, article 37900 is additionally required

required



37233 000A

current transformer 250 A / 5 A, with decl. of conformity
size CT2

2.5 VA / class 0.5

when used on busbars or in 630 A adapters, article 37900 is additionally
required



37234 000A

current transformer 400 A / 5 A, with decl. of conformity
size CT2

2.5 VA / class 0.5

when used on busbars or in 630 A adapters, article 37900 is additionally
required



37235 000A

current transformer 500 A / 5 A, with decl. of conformity
size CT2

2.5 VA / class 0.5

when used on busbars or in 630 A adapters, article 37900 is additionally
required

current transformers class 0.5s



37236 000A

current transformer 250 A / 5 A, with decl. of conformity
size CT2

1 VA / class 0.5s

when used on busbars or in 630 A adapters, article 37900 is additionally
required

stock sale



37237 000A

current transformer 400 A / 5 A, with decl. of conformity
size CT2

2.5 VA / class 0.5s

when used on busbars or in 630 A adapters, article 37900 is additionally
required



37238 000A

current transformer 500 A / 5 A, with decl. of conformity
size CT2

2.5 VA / class 0.5s

when used on busbars or in 630 A adapters, article 37900 is additionally
required

<https://pim.woehner.de/EN/EN/1000044970>